

COMPARED TO STEEL, THEY'RE FLAT OUT THE BEST.

Keeping rotating equipment level is essential. BaseTek Polymer Concrete Baseplates outperform steel baseplates in every way. The difference is Zanite® Plus.

Using PoxyBase CC® and PoxyBase® with Zanite® Plus guarantees an unmatched surface flatness compared to Conventional Steel designs and common Vinyl Ester Concrete materials. Zanite® Plus also provides significant

vibration damping, greater thermal stability, more resistance to twisting and diaphragming, and superior corrosion resistance. And, it is easier and less costly to install and requires no maintenance.

Benefit: equipment that lasts longer and operates more efficiently for a healthier bottom line.

BASETEK— WE'RE ON THE LEVEL.

POXYBASE® WITH ZANITE® PLUS

STAINLESS THREADED LEVELING INSERTS

For fast, accurate leveling of baseplate. Standard on all bases.

MADE FROM ZANITE® PLUS

A proprietary formula combining Epoxy resins with quartz aggregate for exceptional strength and corrosion resistance throughout.

STAINLESS STEEL PUMP & MOTOR INSERTS

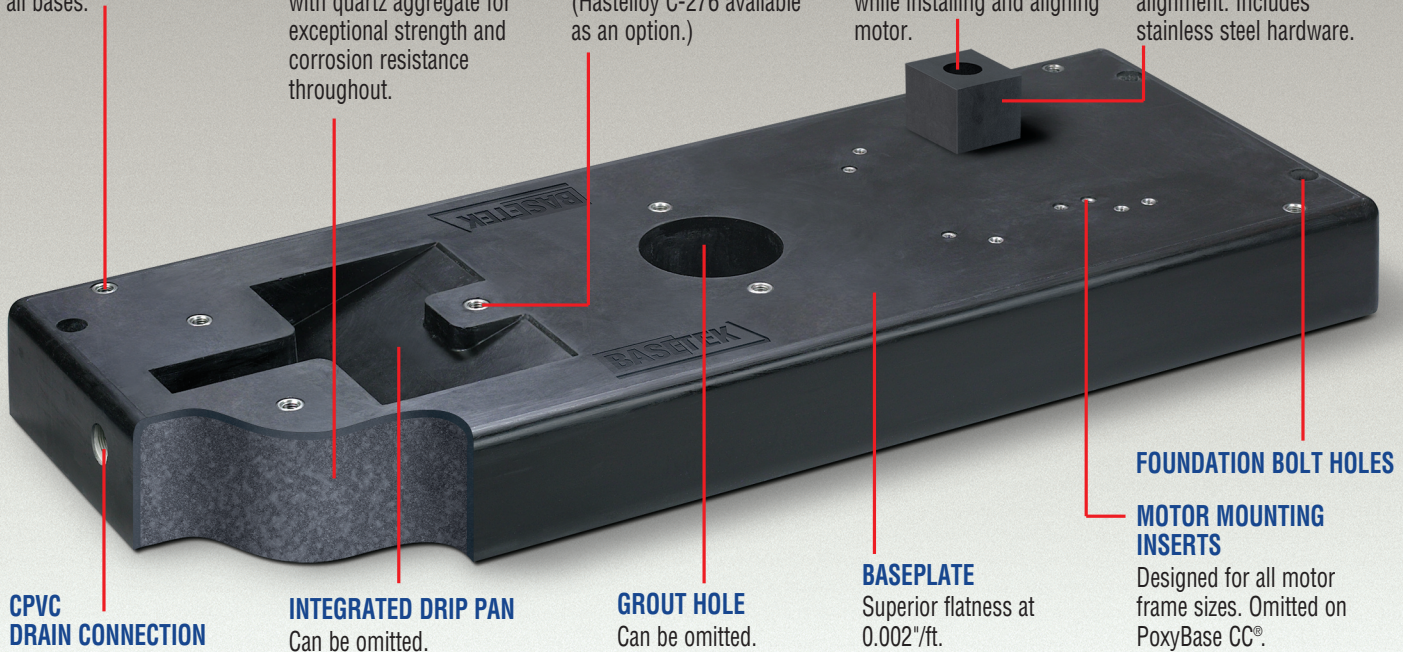
Provide excellent corrosion resistance and durability. (Hastelloy C-276 available as an option.)

RISER BLOCK COUNTERBORE

Enables blocks to be securely fastened to base while installing and aligning motor.

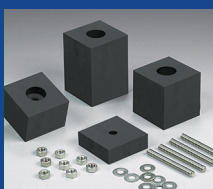
POLYMER MOTOR RISER BLOCKS

Flatness of 0.001"/ft. make for accurate motor/pump alignment. Includes stainless steel hardware.

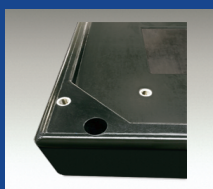


THE ADVANTAGES OF ZANITE® PLUS BASEPLATES

- Flat mounting surface to 0.002"/foot.
- Significantly better vibration damping compared to conventional steel bases.
- Reduces grouting and installation problems, saving time and money.
- ASME/ANSI-1991 dimensionally compliant.
- Excellent resistance to twisting and diaphragming.
- Corrosion resistant to most chemicals.
- Multiple inserts for all motor frames standard on PoxyBase®.
- PoxyBase CC® designed to accommodate close-coupled installations.



POXYBLOCK® KITS
include all Stainless Steel hardware.



DRIP RIM
optional for increased fluid containment.



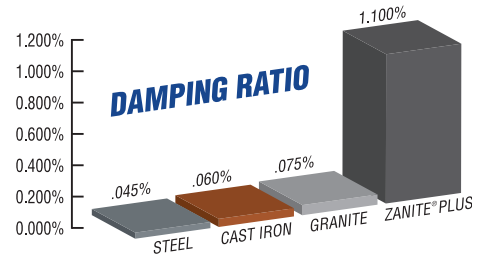
BiD® MOTOR ADJUSTERS
for fast, precise alignment.



STILT MOUNTING KITS
for non-grouted installations.
(Shown with Nord-Lock washer)

CHECK OUT WHY ZANITE[®] PLUS IS BETTER

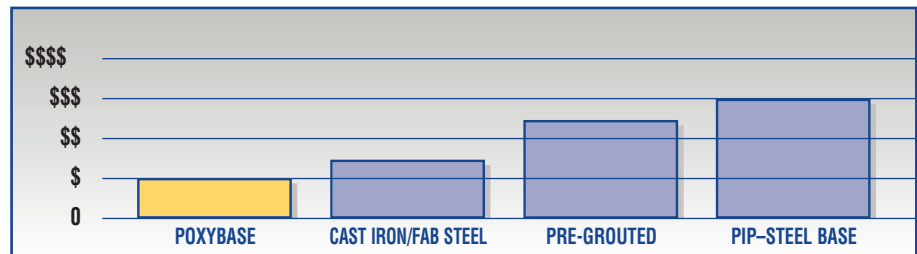
| | | |
|----------------------|---|-----------------------|
| FLATNESS | ✓ | 0.002" PER FOOT |
| COMPRESSIVE STRENGTH | ✓ | 18,000 PSI |
| CORROSION RESISTANCE | ✓ | EXCELLENT |
| DEFLECTION | ✓ | RIGID — WILL NOT BEND |
| VIBRATION DAMPING | ✓ | HIGHEST |
| INSTALLED COST | ✓ | LOWEST |



COMPARE TYPICAL INSTALLATION COSTS*

Using Zanite[®] Plus baseplates instead of conventional steel bases with comparable features will result in significant installation savings.

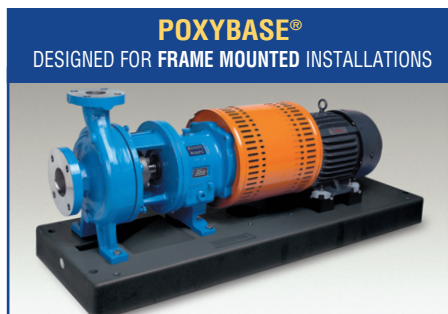
*Comparative costs include baseplate, 316SS drip pan, sandblast and 2-part epoxy system which would yield a product with similar properties as the PoxyBase.



THE DIFFERENCE IS ZANITE[®] PLUS

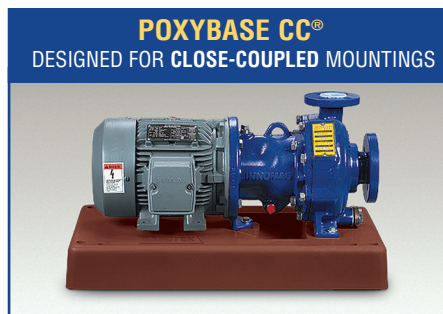
BaseTek's Engineered Zanite[®] Plus Polymer Concrete Baseplates simply outperform standard reinforced steel and stainless steel baseplates. The reason is Zanite[®] Plus. This scientifically formulated, corrosion-resistant concrete material is designed for casting machine bases and other structural components. It is a blend of pure silicon dioxide ceramic quartz aggregate, high strength epoxy resin and selective additives.

THE BOTTOM LINE: a superior, consistently level baseplate increases equipment life spans and significantly reduces the overall costs of ownership.



POXYBASE[®]
DESIGNED FOR FRAME MOUNTED INSTALLATIONS

Available in 16 pre-engineered sizes. Ready to accept ANSI/ASME pumps and NEMA Frame Motors.



POXYBASE CC[®]
DESIGNED FOR CLOSE-COUPLED MOUNTINGS

Available in 5 sizes to easily accommodate close-coupled pump and motor combinations. (shown in optional red Novolac Epoxy)



CUSTOM QUICKBASE[®]
WITH CUSTOM HOLE PATTERN

Include your custom hole pattern on our existing footprints with a quick-approval drawing process, and short production time.



GREENSHIELD[™] — a patented monolithic foundation system combining both the equipment mounting surface and traditional concrete pad into one integrated design. Each foundation is cast with rugged walls containing internal reinforcements eliminating common stress cracking. Precision mounting surfaces along with integrated PoxyVials[™] and optional CenterMark[™] laser aids to speed and insure proper installation. Typical installations are completed in 1-day. **GREENSHIELD — WE MAKE IT EASY!**



BaseTek, LLC 14975 White Road, Middlefield OH 44062 USA
www.basetek.com · 877.712.BASE (2273) · E-mail: info@basetek.com

©2018 BaseTek, LLC. PoxyBase, PoxyStand, PoxyBlock, BiD Motor Adjusters, Zanite, Zanite Plus, and GreenShield are registered trademarks of BaseTek LLC. All images are the property of BaseTek, LLC and cannot be used without written permission.