


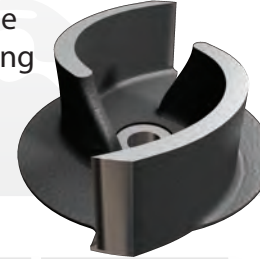
Characteristics

Category	Pump		
	SN	SNS	SNU
Sizes Available	2", 3", 4", 6" 8", 10"	3", 4", 6", 8" 10"	3", 4", 6"
Materials Available	Iron (STD), 316 Stainless, CD4, ADI		
Maximum Capacity	3400 GPM	3400 GPM	1500 GPM
Maximum Head	160 ft	160 ft	207 ft
Maximum Solids	3"	3"	1 1/4"
Weights (Min-Max)	292-1750 (lbs)	432-1750 (lbs)	432-934 (lbs)
Drive Options	Motor Driven Belt-Driven Engine Driven		
Model Image			

Self-Primer Overview

SN

The SN is the original solids handling self-priming pump. Large casing volume allows for dependable re-priming. Removable cover plate gives access to the impeller without disconnecting any piping.



SNS

The SNS is a redesign of the standard SN pump. The use of jacking bolts, an extra lip seal and cover plate O-ring gives the SNS increased reliability and quicker maintenance and setup times.

SNU

This version of the SN series is a higher efficiency pump because of the lower drag casing design and B-version impeller which produces efficiencies to 75%. The SNU still has the ability to handle solids up to 1-1/4" in diameter.



SNS Rotating Assembly



SN/SNU Rotating Assembly



Contact Us:

E-mail: sales@summitpump.com
 Phone: 920-869-4800
 Fax: 920-869-4700
 Mailing Address: Summit Pump, Inc.
 P.O. Box 12145
 Green Bay, WI 54307



SUMMIT™
PUMP, Inc

www.SUMMITPUMP.com

**Self-Primer
 Comparison**



SUMMIT™
PUMP, Inc

www.SUMMITPUMP.com

SN: Original Self-Primer

- Available as an "A", "B", or "C" version:
 - "A"-Version impeller has 2 Vanes
 - "B"-Version impeller has 5 Vanes
("B"-Version supplies higher heads and efficiencies)
 - "C"-Version 2 Vane with Switchback™



SN

- Impeller adjustment by use of shims between rotating assembly and casing
- Two bolt attachment and single O-ring on the cover plate
- Single IB lip Seal and oil cavity in rotating assembly

SNS: Redesigned Self-Primer

- Available as an "A", "B", or "C" version:
 - "A"-Version impeller has 2 Vanes
 - "B"-Version impeller has 5 Vanes
("B"-Version supplies higher heads and efficiencies)
 - "C"-Version 2 Vane with Switchback™



SNS

- Wear plate clearance is adjusted by using bolts which, also simplifies disassembly and maintains clearance upon reassembly
- Four bolt attachment and double O-ring on the cover plate
- Double IB lip seals with an atmospheric barrier gives the bearings extra protection

SNU: High Efficiency Self-Primer

- Available in "B" version:
 - "B"-Version impeller has 6 Vanes



SNU

- Same adjustments and features as the SN pump
- Higher efficiencies because of the casing design
- Single IB lip seal and oil cavity
- Available in 3", 4" and 6" models